

8215

GREENWAY BLVD
MIDDLETON, WI





LOCATION

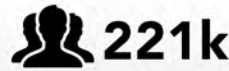
Located just blocks from the West Beltline Highway 12/14 with quick access to the west and southern suburbs. this site is at the entrance to Greenway Center - Middleton's most prestigious office park - and Greenway Station - Middleton's largest retail development.



VARIOUS CHOICES OF RESTAURANTS WITHIN 2 MILES



PARKS AND 5 AREA LAKES FOR OUTDOOR RECREATION.



THE WORKFORCE BETWEEN THE AGES OF 18 AND 64 IN MADISON REGION



8215 | GREENWAY BLVD

PROPERTY

8215 Greenway Boulevard, One Financial Place offers 6 stories and 130,000 Sq. Ft. of Class-A office space. Located in the West Madison/Middleton business community, in the heart of the Greenway Station retail center.

AMENITIES

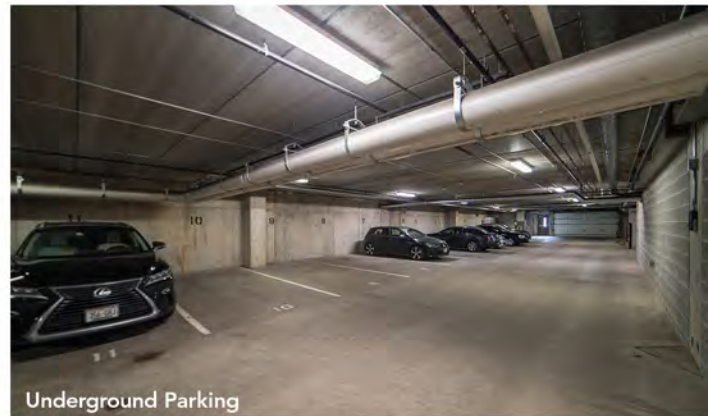
On-site board rooms, pub style lounge, showers, card access, security cameras ,all glass atrium, fiber optics, heated parking, large surface parking lot, first class property management with on-site maintenance and 24/7 emergency in-house maintenance staff.

OVERVIEW

BUILDING HOURS	6:45 a.m. - 6:00 p.m. M-F
SIGNAGE	Building & monument signage available
STORIES	6
PARKING	Underground and surface parking
HVAC SYSTEM	Heat pump
SEVURITY FEATURES	Cameras and key card access
TELEPHONE/CABLE/ INTERNET PROVIDERS	TDS Metrocom/TDS Telecom/Charter
FIBER OPTIC BROADBAND SERVICE	2 Fiber providers



All Glass Atrium



Underground Parking



Pub Style Lounge



On-site Board Rooms

8215 |
GREENWAY BLVD

LEASING CONTACT



Leon R. Wilkosz, CCIM, RPA®
Senior Vice-President
Asset Management - Madison

608.830.6302
lwilkosz@artisreit.com



Kyle Robb, CCIM
Leasing Manager - Madison

608.830.6308
krobb@artisreit.com

ABOUT US

Artis REIT (TSX: AX.UN) is one of the largest diversified commercial real estate investment trusts in Canada and is an unincorporated closed-end real estate investment trust primarily focused on creating value for unitholders through the investment in and ownership of quality commercial properties in select markets.

Artis REIT's portfolio consists of industrial, retail and office properties in Canada and the United States.

